

NEW TOWN HALL FOR:  
**VILLAGE OF ST. HELENA**  
EAST MAIN STREET  
ST. HELENA, N.C.

Project Reference Numbers

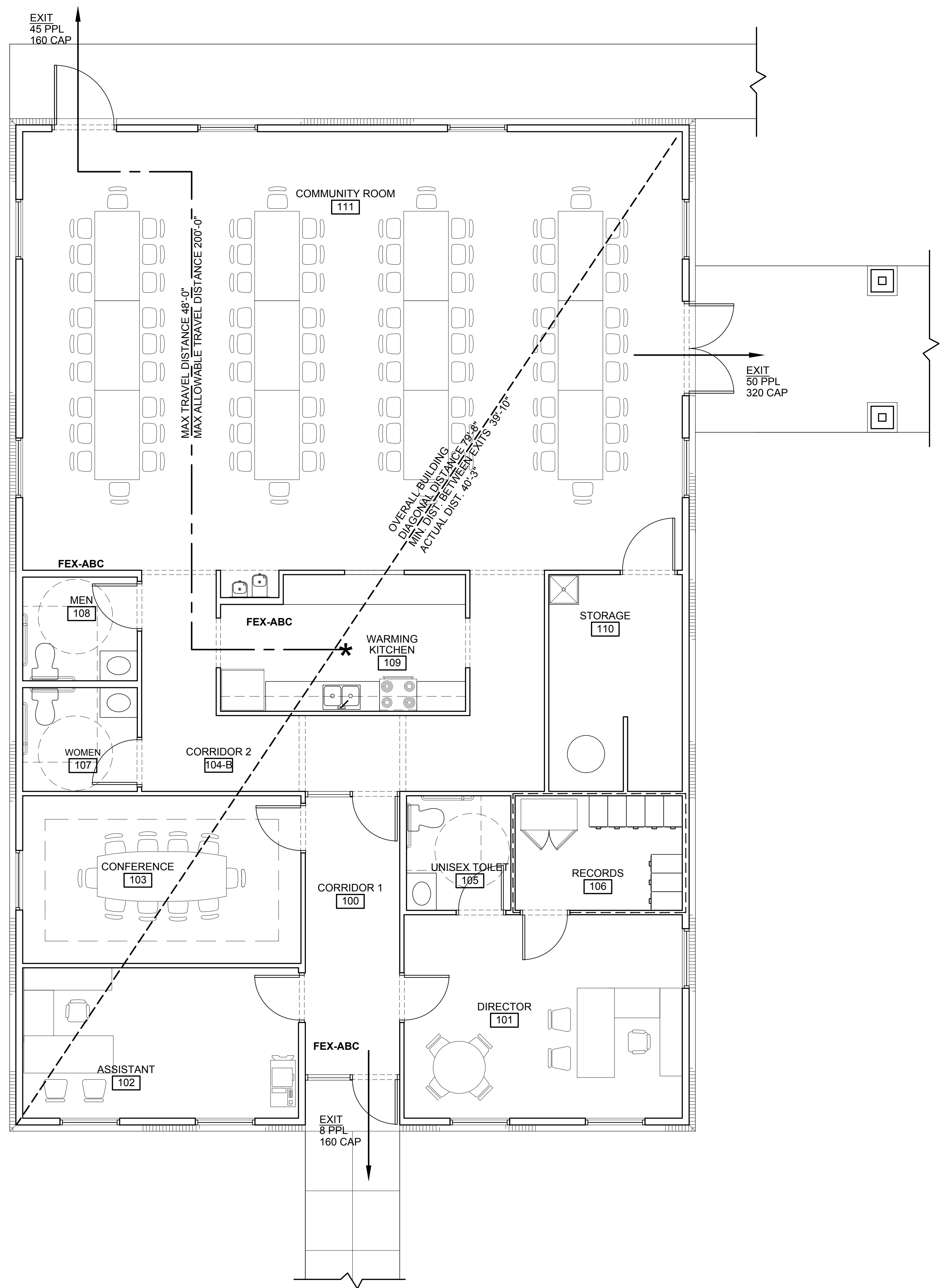
Architect's Project No. 180009  
Drawn By: JGM

REVISIONS

DATES	
PHASE	ISSUED
PERMIT	05/15/2018

LIFE SAFETY  
PLAN  
SHEET NUMBER

**LS1**



**LIFE SAFETY INFORMATION:**  
**PRIMARY OCCUPANCY: ASSEMBLY (A) (CONSTRUCTION TYPE: V-B):**  
**SECONDARY OCCUPANCY: BUSINESS (B)**  
**ACCESSORY OCCUPANCY: STORAGE (S)**  
**A:** 1,447 SF @ 15 N.S.F. / OCCUPANT = 97 OCCUPANTS  
**B:** 745 SF @ 100 G.S.F. / OCCUPANT = 8 OCCUPANTS  
**S:** 130 SF @ 300 G.S.F. / OCCUPANT = 1 OCCUPANTS  
**TOTAL CALCULATED OCCUPANT LOAD: 106 PEOPLE**  
**MAXIMUM POSTED OCCUPANT LOAD: 299 PEOPLE**  
 PER 2012 NCSBC 1015.1:  
 MINIMUM EXITS REQUIRED: 2  
 EXITS PROVIDED: 3  
 MAX TRAVEL DISTANCE: 48'-0" FROM REMOTE LOCATION  
 MAX ALLOWABLE: 300'-0"  
 DIAGONAL DISTANCE: 79'-8" (BUILDING)  
 DISTANCE BETWEEN EXITS: 40'-3" (39'-10" MIN. REQUIRED)  
 COMMON PATH OF TRAVEL: 100'-0" (MAX)  
**PLUMBING INFORMATION:**  
**PRIMARY OCCUPANCY: ASSEMBLY (A)**  
**WATERCLOSET:**  
 REQUIRED: 2  
 MEN - 1 PER 125 / 53 OCCUPANTS = 1 REQUIRED  
 WOMEN - 1 PER 65 / 53 OCCUPANTS = 1 REQUIRED  
 PROVIDED: 3 (1 EACH SEX & 1 UNISEX)  
**LAVATORIES:**  
 REQUIRED: 2  
 MEN - 1 PER 200 / 53 OCCUPANTS = 1 REQUIRED  
 WOMEN - 1 PER 200 / 53 OCCUPANTS = 1 REQUIRED  
 PROVIDED: 3 (1 EACH SEX & 1 UNISEX)  
**DRINKING FOUNTAIN:**  
 REQUIRED: 1 PER 500  
 PROVIDED: 2 (1 ADA)

**LEGEND**  
**EXIT**  
 INDICATES REQUIRED EXIT  
**10 PPL**  
 INDICATES TRAVEL DIRECTION  
**10 CAP**  
 INDICATES CALCULATED OCCUPANT LOAD FOR EGRESS REQUIREMENTS  
**FEX-ABC** ABC TYPE RECESSED CABINET FIRE EXTINGUISHER TO MEET NFPA-10 STANDARDS. MOUNT @ 15" MIN - 48" MAX AFF.  
 PROVIDE HANDICAPPED ACCESSIBLE ROUTE FROM ALL REQUIRED EXITS TO PUBLIC WALKS