

GENERAL PLANTING NOTES

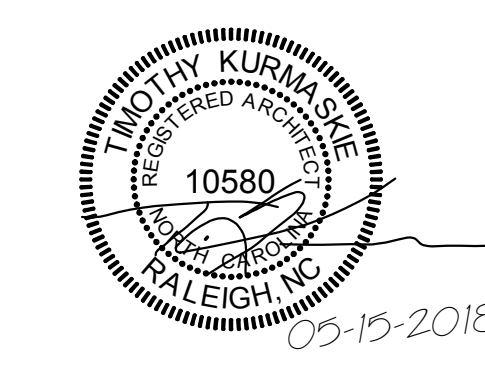
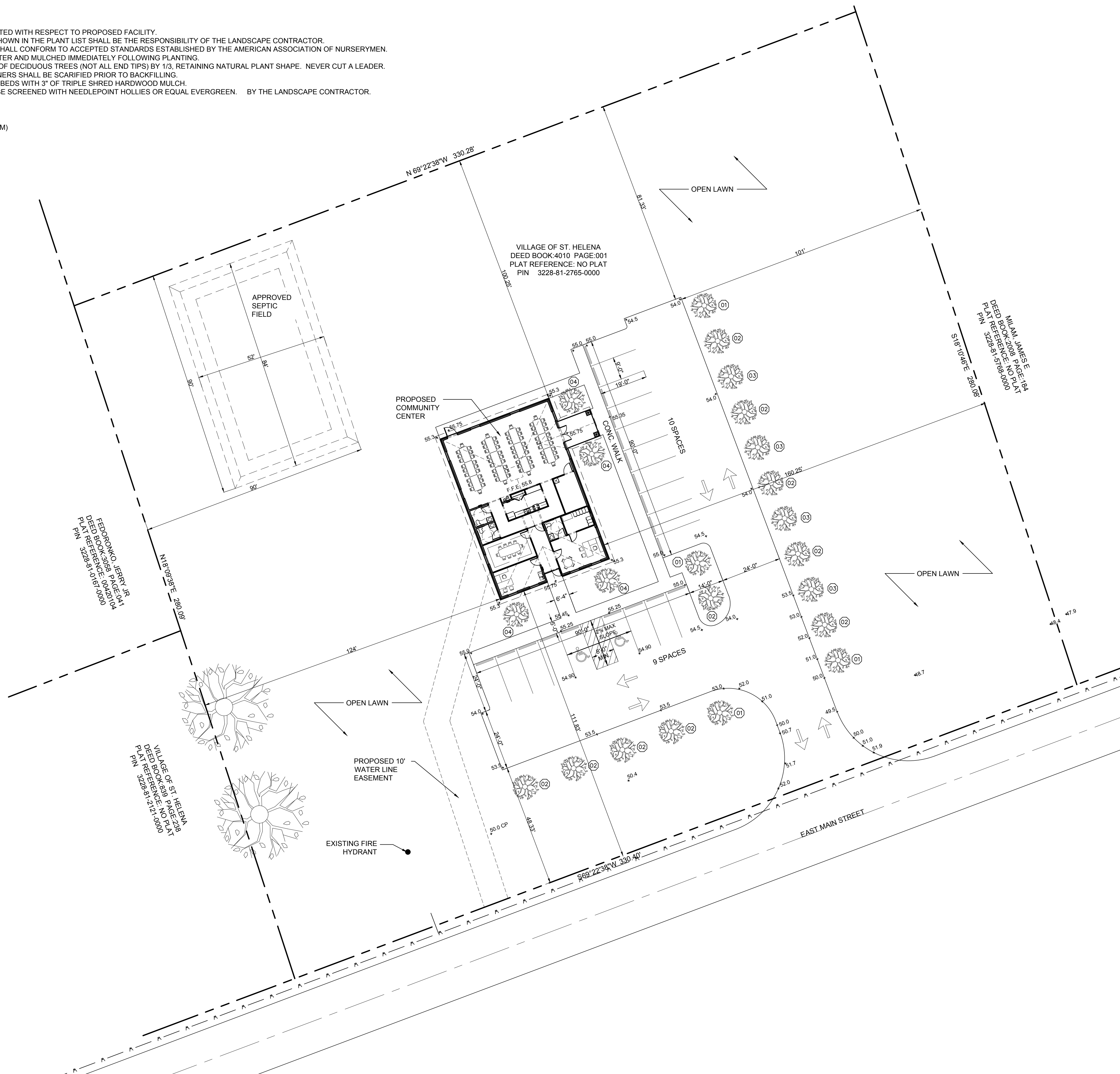
1. ALL TREES AND SHRUBS HAVE BEEN LOCATED WITH RESPECT TO PROPOSED FACILITY.
2. VERIFICATION OF TOTAL QUANTITIES AS SHOWN IN THE PLANT LIST SHALL BE THE RESPONSIBILITY OF THE LANDSCAPE CONTRACTOR.
3. ALL TREES, SHRUBS AND OTHER PLANTS SHALL CONFORM TO ACCEPTED STANDARDS ESTABLISHED BY THE AMERICAN ASSOCIATION OF NURSERYMEN.
4. ALL SAUCERS SHALL BE SOAKED WITH WATER AND MULCHED IMMEDIATELY FOLLOWING PLANTING.
5. PRUNING - THIN BRANCHES AND FOLIAGE OF DECIDUOUS TREES (NOT ALL END TIPS) BY 1/3, RETAINING NATURAL PLANT SHAPE. NEVER CUT A LEADER.
6. ALL ROOT BALLS REMOVED FROM CONTAINERS SHALL BE SCARIFIED PRIOR TO BACKFILLING.
7. MULCH ALL DISTURBED AREAS AND PLANT BEDS WITH 3" OF TRIPLE SHRED HARDWOOD MULCH.
8. ALL ABOVE GROUND UTILITY DEVICES TO BE SCREENED WITH NEEDLEPOINT HOLLIES OR EQUAL EVERGREEN. BY THE LANDSCAPE CONTRACTOR.

PLANTING KEYNOTES

- 01 OCTOBER GLORY RED MAPLE (ACER RUBRUM)
2" CALIPER, 8' MIN HGT., QUANTITY: 3
- 02 TUSCARORA CREPE MYRTLE
(LAGERSTROEMIA INDICA)
1.5"-2" CALIPER, 8' MIN HGT., QUANTITY:10
- 03 JAPANESE ZELKOVA (ZELKOVA SERRATA)
2" CALIPER, 8' MIN HGT., QUANTITY: 4
- 04 RIVER BIRCH (BETULA NIGRA)
2" CALIPER, 8' MIN HGT., QUANTITY:4

IMPERVIOUS AREA

TOTAL LOT SIZE: 91,040 SF
 IMPERVIOUS AREA: 15,936 SF
 PERCENTAGE IMPERVIOUS: 17.5%



NEW TOWN HALL FOR:
VILLAGE OF ST. HELENA
 EAST MAIN STREET
 ST. HELENA, N.C.

Project Reference Numbers
 Architect's Project No. 180009
 Drawn By: JGM

REVISIONS

DATES	
PHASE	ISSUED
PERMIT	05/15/2018

**SITE
 PLAT
 PLAN**

SHEET NUMBER

